

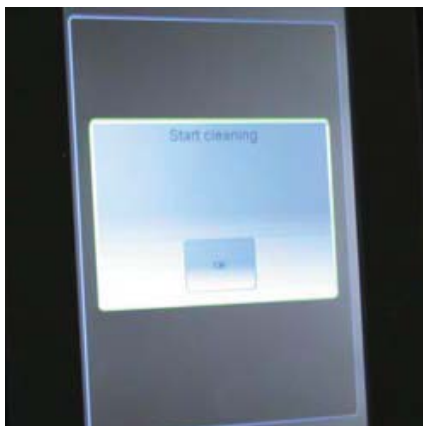
Coffee Art C Touch

Daily Cleaning Instructions

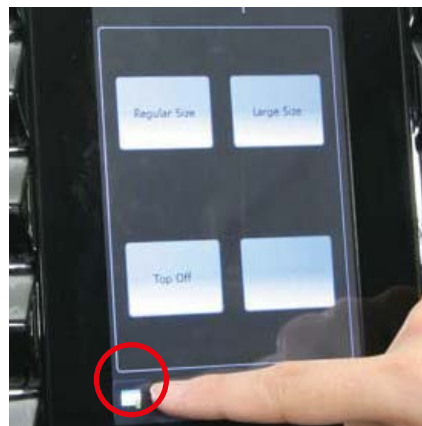
- ⓘ Read and follow the instructions carefully before you begin the daily cleaning procedure. This procedure should be performed on a daily basis or when prompted by the machine display. Never reach into the machine or under the coffee spout during the automatic cleaning cycle!
- ⓘ When the "Start cleaning" message appears on the screen, follow the instructions to initial the clean cycle. **Note:** In some configurations, the machine will automatically initiate the cleaning cycle after two hours of the "Start cleaning" message appears. During that time all product buttons will be locked until the procedure is completed.
- ⓘ To order cleaning supplies please call 888.989.3004.




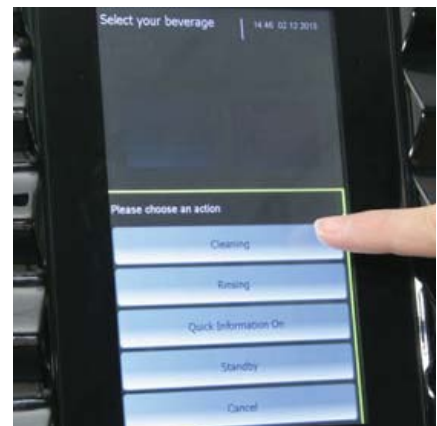
1. Use only Schaerer cleaning supplies for this procedure.



2. When the "Start cleaning" message appears on the screen, press "OK" and move to the next step.



3. Press the  icon to go into the service menu. In some configurations, this icon may be hidden. If hidden, press and hold the same area (bottom left corner) for 3-5 seconds. Service menu will appear.



4.1 Select "Cleaning".

Coffee Art C Touch

Daily Cleaning Instructions

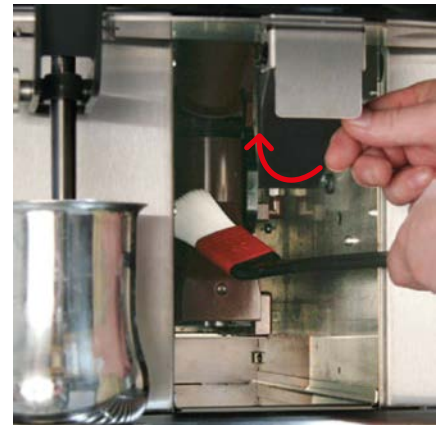


4.2 Immediately remove grounds bin within 6 seconds. Empty coffee grounds into trash can. Wash, rinse, sanitize bin and set aside.

i If grounds bin is not removed within 6 seconds, the machine will return to normal operating mode. If this happens, repeat step 3 and 4.



5. Remove metal shield above grounds bin and set aside.



6. Use large cleaning brush to wipe coffee grounds from brew unit and surrounding areas into drip tray. Do not touch brew unit or any other parts of inside area with your hands.



7. Put back metal shield and slide coffee grounds bin back into place.



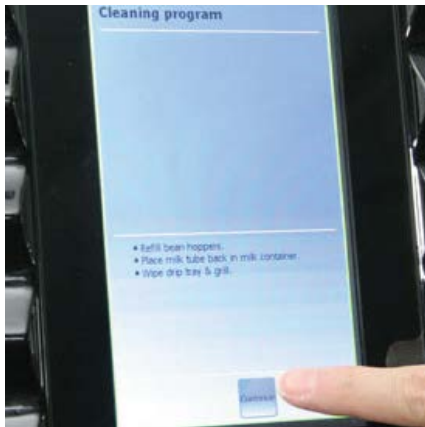
8. Lift dome lid and drop in one Schaefer cleaning tablet. Close lid after dropping tablet. Press "OK" on the screen. **Note:** Dome lid is located behind front center hopper for 3 grinder machine configuration.



9. Press "Continue" on the screen to activate cleaning cycle. **Cleaning runs (4:33 min.)**

Coffee Art C Touch

Daily Cleaning Instructions



10. Refill beans if necessary. Press "Continue" to return to normal operating mode.



11. When automated cleaning cycle is complete, flush drip tray with a pitcher of water. Wipe the machine exterior thoroughly with a clean, damp cloth to remove residue.